

Open Text Document Server Alchemy Edition Release Notes

Version 9.0 Service Release 1

10/16/2012



Contents

1	Introduction	3
1.1	Release Notes Revision History	3
2	About Open Text Document Server, Alchemy Edition	4
2.1	New Features	4
3	Packaging and Documentation	5
3.1	Documentation	5
3.2	Packaging and Delivery Information	5
4	Installation and Upgrade Notes	6
4.1	Installation Notes	6
4.2	Critical Patches	6
4.3	Upgrade Notes	6
5	Fixed Issues.....	7
5.1	Alchemy Client	7
5.2	Alchemy Web	8
5.3	Exchange Archive Link for Alchemy.....	10
5.4	File Connector	10
5.5	Enhanced Web Client	11
5.6	General	11
6	Known Issues.....	13
7	Contact Information	14



1 Introduction

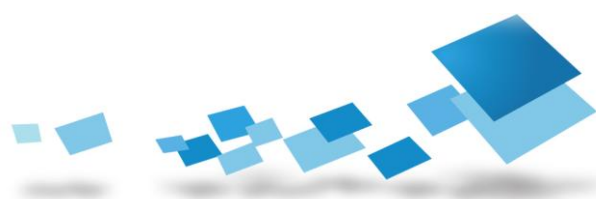
These Release Notes describe updates and last minute changes in Open Text Document Server Version 9.0 Service Release 1 (9.0 SR1). Open Text recommends that you read these Release Notes in conjunction with the documentation included with the software package. If any conflicts exist, the Release Notes supersede the other documentation.

We also recommend that you check the [Open Text Knowledge Center](https://knowledge.opentext.com/) (<https://knowledge.opentext.com/>) for any patches or documentation updates that may have been posted after the initial release of Open Text Document Server Version 9.0 SR 1.

1.1 Release Notes Revision History

If the release notes document is modified and republished, update the revision history to indicate what changed from the previous version.

Topic	Modifications	Revision Number
Alchemy Document Server 9.0 SR1	First Draft	1.0.0



2 About Open Text Document Server, Alchemy Edition

Open Text Document Server, Alchemy Edition (formerly Captaris Alchemy) is simple to deploy and enables organizations and users to easily capture, store, manage, archive and dispose of their documents. By tightly integrating with Open Text Fax Server, RightFax Edition and Open Text Workflow Server, .NET Edition, organizations are able to manage business-critical documents from capture to destruction. Document Server is a cost-effective document imaging and archiving system providing solutions for small-to-medium organizations and departments within the enterprise.

2.1 New Features

Open Text Document Server, Alchemy Edition 9.0 Service Release 1 includes support for:

2.1.1 Operating System Support

- Alchemy now supports Microsoft Windows 8, 32 bit and 64 bit
- Alchemy now supports Microsoft Windows Server 2012, 64 bit
- File Connector client installation is now supported on Windows 7, 64-bit, Windows 8, 32 bit and 64 bit

2.1.2 Others

- Alchemy Document Management Client (ADMC) is compatible with Microsoft Office 2007 and Microsoft Office 2010
- Alchemy Web and Alchemy Enhanced Web Client are supported on IE 10 under Compatibility View mode



3 Packaging and Documentation

3.1 Documentation

- Changing the Port numbers used for Alchemy Web will stop the Enhanced Web client from working (ALC-4039)

In case the port numbers are modified, for Enhanced Web Client to work “AuWebRemoting.config” located at C:\ProgramData\AlchemySilverlight\ (on a Microsoft Windows 2008 or Windows 7 operating system) or C:\Documents and Settings\All Users\Application Data\AlchemySilverlight\ (on a Windows 2003 operating system) should be updated with the new port numbers

*For more details refer to the tech note in the Knowledge Center.
<https://knowledge.opentext.com/knowledge/llisapi.dll/Open/16222422>*

- Enabling "All Databases" as the Default Search Option doesn't work (ALC-1891)

If the Search in All Databases option is preferred irrespective of the node highlighted in the tree view/viewer pane, the value of SearchAllDBAlways under [Search] section within Alchemy.ini should be manually set to 1

*For more details refer to the tech note in the Knowledge Center.
<https://knowledge.opentext.com/knowledge/llisapi.dll/Open/16961989>*

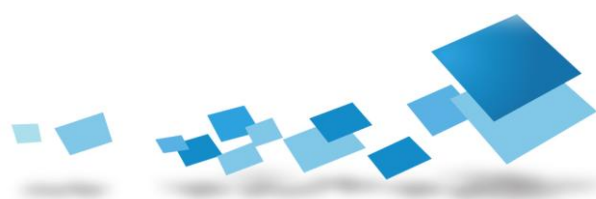
- In Alchemy, when AD Groups are assigned to a security role, users of the AD Group do not get access (ALC-2134)

When creating trusts between two domains, the trusting domain should have an “External trust” with the trusted domain. Alchemy product will not work with the trust type set to “Forest trust”

3.2 Packaging and Delivery Information

The full version of the Alchemy installer (ISO), for fresh installation of 9.0 SR1 can be downloaded from Open Text Knowledge Center:

<https://knowledge.opentext.com/>



4 Installation and Upgrade Notes

4.1 Installation Notes

To install Open Text Document Server, Alchemy Edition Version 9.0 SR1:

1. Download the executable file to a computer where Document Server is installed
2. Navigate to the location where you saved the executable and double-click the executable file to begin the installation
3. Follow the onscreen prompts to install the service release
4. When prompted, restart the computer

For more details on installation, refer **Alchemy Installation and Licensing Guide.pdf**.

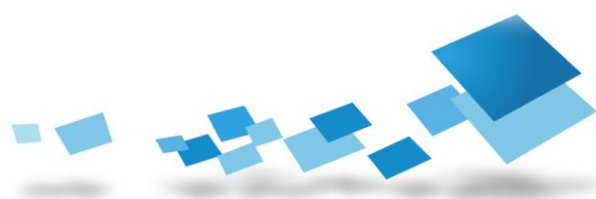
4.2 Critical Patches

None

4.3 Upgrade Notes

Upgrade from following prior versions of Alchemy Document Server is supported:

- Alchemy 8.3 SR7
- Alchemy 8.3 SR8
- Alchemy 9.0



5 Fixed Issues

Alchemy 9.0 SR1 includes resolution to the following issues.

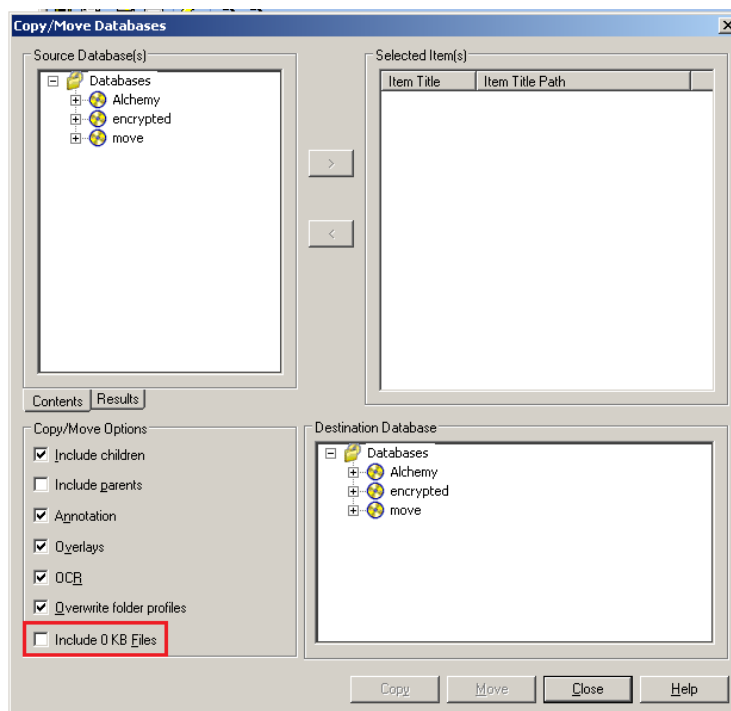
5.1 Alchemy Client

1. Unable to purge files created from a Copy/Move from another database (ALC-2863)

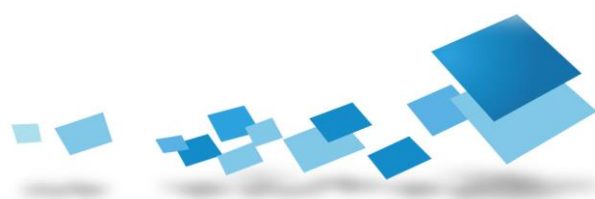
As part of the Copy / Move operation, just after the database is built, the temporary files would be deleted. Temporary files created during the “Add” operation can be cleared using the “Purge” option available under “File” menu

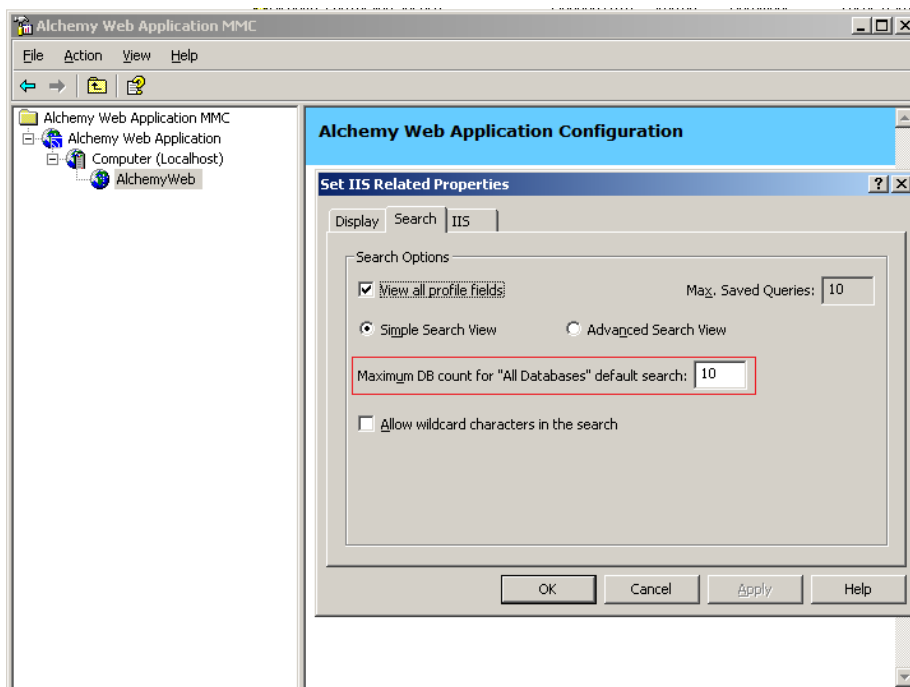
2. Copy/Move function does not work on 0KB files in 8.3SR6 when it previously had in 8.2 (ALC-3081)

A new property “Include 0 KB files” has been added on the Copy / Move wizard. Enabling this property would allow copy / move of 0 KB files. Default value for this property is turned off (which would mean “disallow copy/move of 0 KB files”). Also, once set, this property would apply across databases



Note: This setting is persisted in `Alchemy.ini` under the `[CopyMove]` section against “`AllowZeroKBFiles`” option; ‘1’ meaning allow and ‘0’ meaning disallow





Note: By default, the property value is configured to '10'

2. AlchemyWeb: Encrypted Databases are not displaying root content view without the Database Encryption module licensed (ALC-2728)

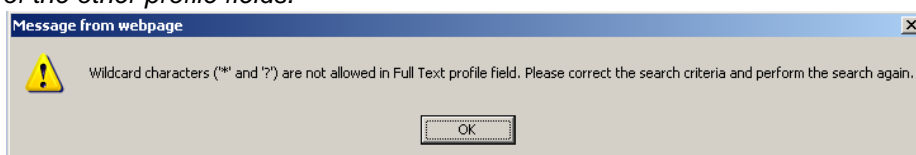
An encrypted database can now be added to a server that does not have Database Encryption license and the database can still be accessed as a Read-Only database within Alchemy Web

3. In Alchemy Web Read Only dbs will show error but still allow you to click and view image (ALC-1771)

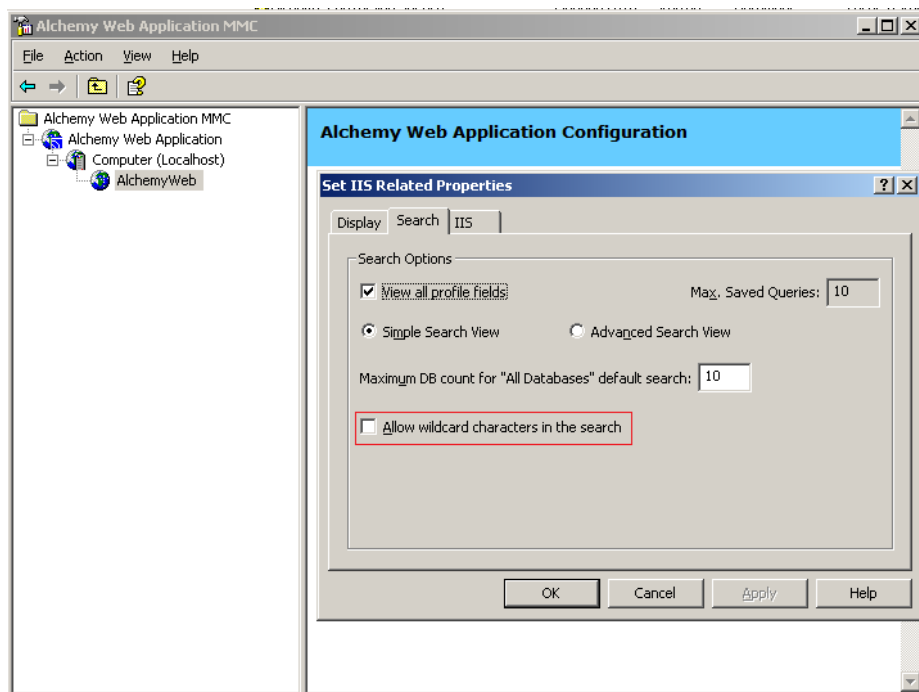
Read-Only databases can now be accessed within Alchemy Web without issues

4. XMLConversionLayer is crashing when multiple wildcard searches are performed via AlchemyWeb (ALC-3841)

Wildcard character search can be performed either on profile fields or on the document content. Wildcard search on document contents could get machine resource intensive resulting into XMLConversionLayer crash. Hence, wildcard character search on "Document Content" or "Full Text" has been restricted by default and user can perform wildcard character search on any of the other profile fields.



However, this behavior is configurable and in case the wildcard character search generally do not result into too many search results, Administrator can turn on the wildcard character search even for Document Contents/Full Text from the Alchemy Web Application MMC



5.3 Exchange Archive Link for Alchemy

1. EALA - When Database Title has an ampersand "&" then adding database to EALA produces an error (ALC-3852)

Databases with any special characters in the database name can be now accessed in the EALA administrator

2. EALA 9.0 is not parsing rules correctly. Messages that do not match rules should be moved to the Exception folder (ALC-3759)

In case an email does not meet any of the configured rule criteria, it would be now moved to the exceptions folder configured as part of the "Exchange Server" properties in the EALA administrator

5.4 File Connector

1. Microsoft Office 2010 Upload Manager error when saving files checked out via File Connector Client (ALC-4162)

Microsoft Office documents can now be checked out, edited, saved and checked back into the Alchemy database using the FileConnector client



5.5 Enhanced Web Client

1. Alchemy 9.0: When choosing different drive than C to install, Alchemy Enhanced Web Client installs to the C drive and doesn't function (ALC-4165)

Alchemy Enhanced Web Client would be now installed in the drive chosen during the installation process

2. Profile field of type "Date" shows timestamp when displayed in Enhanced Web Client

"Date" profile field information would now show up in just the date format

3. Date and DateTime fields in Enhanced Web Client are not displayed in user locale

Data and Date/Time profile field values would be now formatted and displayed based on the users preferred language configured in the browser

4. Resolution of the documents viewed in Enhanced Web Client not at par with Alchemy Web

Improved document clarity even when the document is zoomed in

5. Unable to install Enhanced Web Client on non-English OS (ALC-3787)

Installation of Enhanced Web Client is supported on non-English operating systems

6. Unable to view documents in Enhanced Web Client when installed on non-English OS

Documents can be accessed and viewed in an Enhanced Web Client application deployed on non-English operating system

7. ALC-3904: Date fields should display as dates based on regional settings.

8. ALC-4043: Display quality of TIF images degraded.

9. Highlighting the Full Text search results within Microsoft Office documents when Microsoft Office suite is installed on the Alchemy Server

In case Microsoft Office is installed on the Alchemy Server converting the Microsoft Office documents to XPS format, Full Text Search results matching the search criteria would be highlighted within the Enhanced Web Client

5.6 General

1. Alchemy Productivity Suite Client will not grab an Index Station license (ALC-3979)



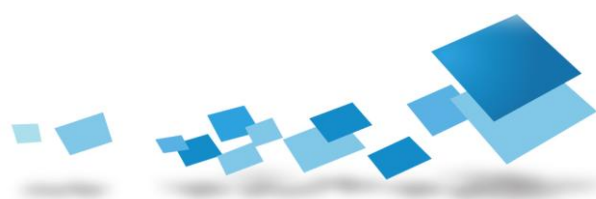
Alchemy Productivity Suite client would now consume Index Station license

2. Search license not being checked-in when the user closes the browser without logging out of Alchemy Web (ALC-1796)

Upon browser closure, the search license gets released even if the user does not log out of Alchemy Web explicitly before closing the browser

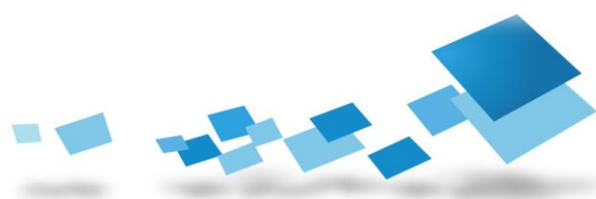
3. Alchemy 9.0 Gold version cannot be licensed on Windows 7, therefore unusable (ALC-4163)

When a Gold installation is done even without selecting License Manager, PLU gets deployed now and user can proceed with licensing



6 Known Issues

- On Windows 8 and Windows Server 2012, Alchemy Server service can be stopped only after stopping the Alchemy Web LM Service. In case the Alchemy Server is stopped without stopping the Alchemy Web LM Service, the operation would hang and one needs to terminate the service forcibly from the Windows Task Manager
- Launching Alchemy Web in IE 10 requires “Compatibility View” setting to be turned on, without which, some of the features of Alchemy Web would be nonfunctional



7 Contact Information

Open Text Corporation
275 Frank Tompa Drive, Waterloo, Ontario, Canada, N2L 0A1
Tel: +1-519-888-7111
Toll Free Canada/USA: 1-800-499-6544
International: +800-4996-5440
Fax: +1-519-888-0677

E-mail: [mailto: support@opentext.com](mailto:support@opentext.com)

FTP: <ftp://ftp.opentext.com>

Knowledge Center: <https://knowledge.opentext.com/>

For more information, visit <http://www.opentext.com>

www.opentext.com