

Table of Contents

Introduction	2
Welcome.....	2
Reference Information	3
Setup	4
AS400 LPR.....	4
Create AS/400 Output Queue.....	4
Remove Printer Codes.....	5
Configure AS/400 Output Queue	8
Windows LPD	12
Windows 2000.....	12
Windows NT	14
Installing Reform Printer Driver	14
Reform Printer Driver	14

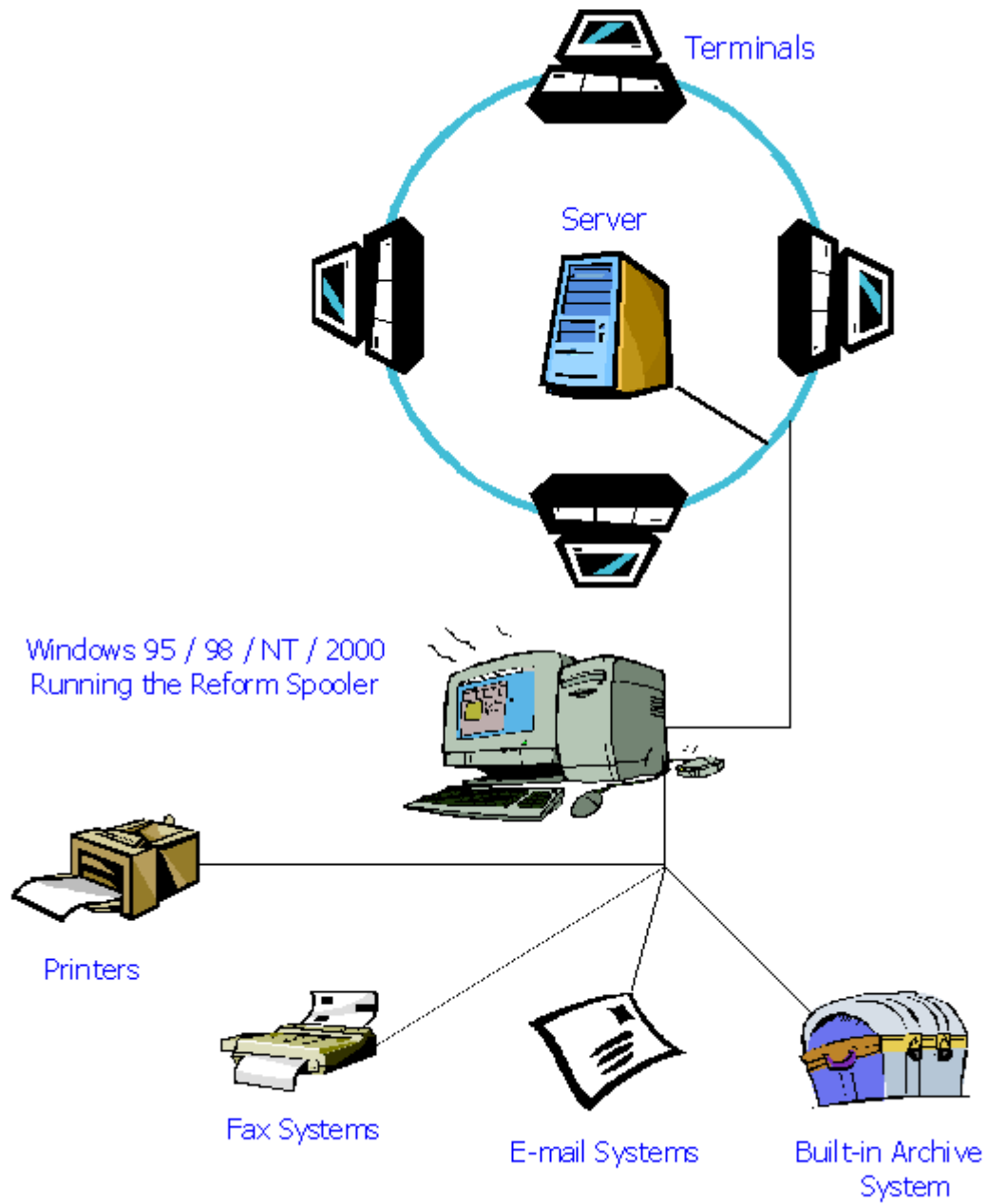
Introduction

Welcome

AS/400 capture method is referred to as Inbound Connectivity for Reform. Inbound Connectivity is redirecting an application print stream into a file so the Reform Spooler can automatically process the print stream.

The method to accomplish the Inbound Connectivity:

- The first method uses AS/400 native functions and is called Line Printer Requester and Line Printer Daemon or LPR/LPD for short. The AS/400 printer Output Queue is redirected to a remote printing device LPR. This printing device is the Reform Printer driver that resides on a Windows computer LPD. This method uses TCP/IP to connect the AS/400 and the Windows computer.



Copyright © FabSoft 2002

Reference Information

Links of interest:

<http://www.mcpressonline.com/mc/.218b73ff>

LPD service listens on TCP/IP port 515

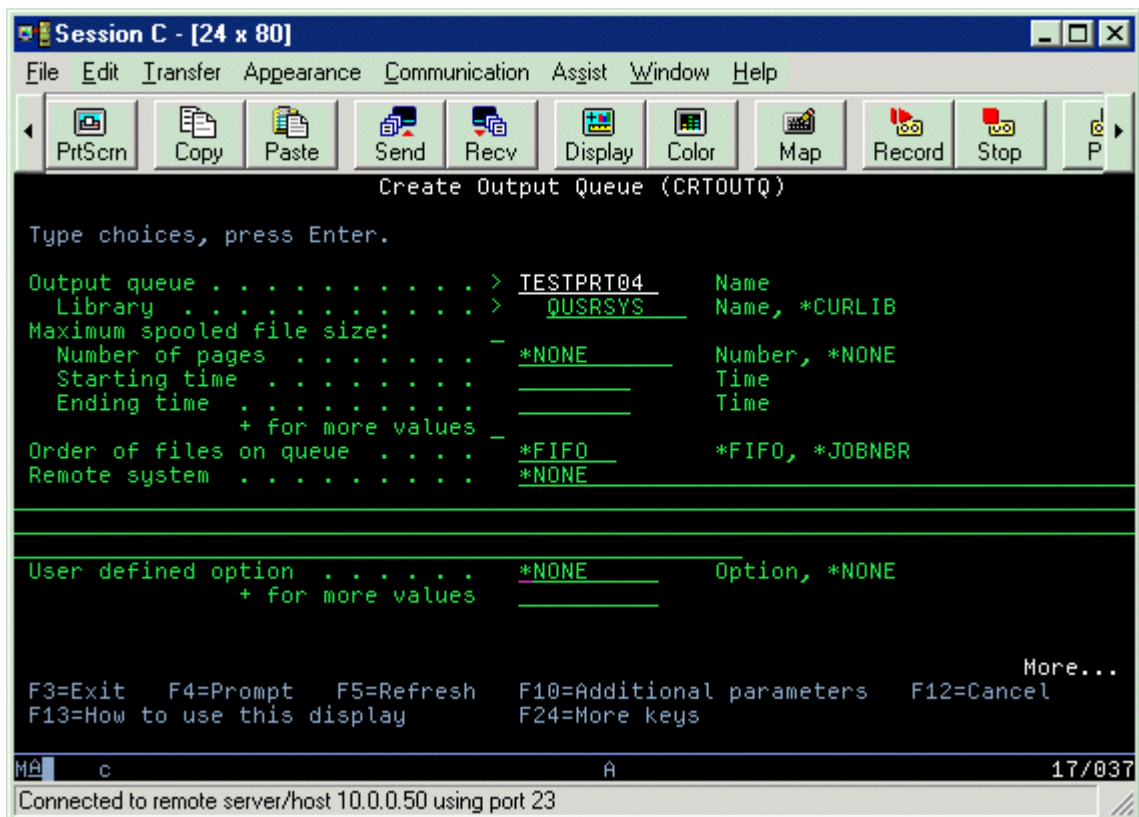
Copyright © FabSoft 2002

Setup

AS400 LPR

Create AS/400 Output Queue

To Create an AS/400 Output Queue, type in CRTOUTQ at the AS/400 command prompt and then press F4, F10. Once the Create Output Queue screen appears, fill it in from the example below, the Output queue can be any name, in this example we used TESTPRT04.



Remove Printer Codes

In order to remove printer codes you must first edit the WSCST object.

To Retrieve the WSCST object type in RTVWSCST at the AS/400 command prompt.

```
Session C - [24 x 80]
File Edit Transfer Appearance Communication Assist Window Help
PrintScreen Copy Paste Send Recv Display Color Map Record Stop Play Quit
Retrieve WSCST source (RTVWSCST)
Type choices, press Enter.
Device type . . . . . > *TRANSFORM *TRANSFORM, 3101, 3151...
Manufacturer type and model . . . > *WSCSTNONE
Source member . . . . . > TEXTONLY Name
Source file . . . . . > QTXTSRC Name
Library . . . . . > QUSRSYS Name, *CURLIB, *LIBL
Text 'description' . . . . . > *BLANK
Bottom
F3=Exit F4=Prompt F5=Refresh F12=Cancel F13=How to use this display
F24=More keys
MA c A 05/037
Connected to remote server/host 10.0.0.50 using port 23
```

Press Enter to end this section.

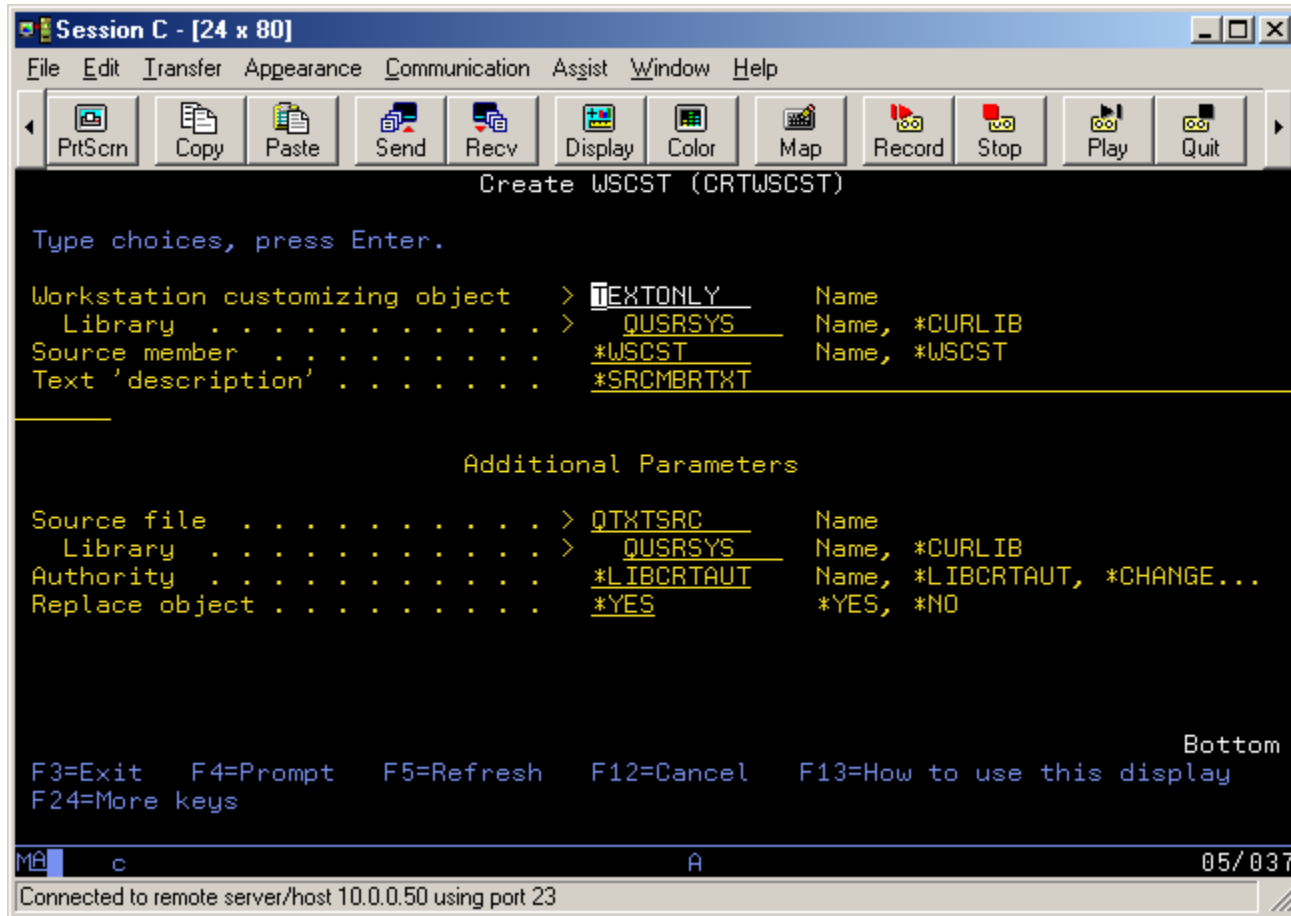
Type in `strseu srfile(qusrSYS/qtxtsrc) srcmbr(textonly)` at the AS/400 command prompt. This will open up the WSCST object in a text editor.

```
Session C - [24 x 80]
File Edit Transfer Appearance Communication Assist Window Help
PrintScreen Copy Paste Send Recv Display Color Map Record Stop Play Quit
Columns . . . : 1 71 Edit QUSRSYS/QTXTSRC
SEU=> TEXTONLY
***** Beginning of data *****
0000.01 :WSCST DEVCLASS=TRANSFORM.
0000.02
0000.03 :TRNSFRMTBL.
0000.04 :INITPRT
0000.05 DATA ='00'X.
0000.06 :SPACE
0000.07 DATA ='20'X.
0000.08 :CARRTN
0000.09 DATA ='0D'X.
0000.10 :FORMFEED
0000.11 DATA ='0C'X.
0000.12 :LINEFEED
0000.13 DATA ='0A'X.
0000.14 :EWSCST.
***** End of data *****
(C) COPYRIGHT IBM CORP. 1981, 1999.
MA c A 02/009
Connected to remote server/host 10.0.0.50 using port 23
```

Remove the lines for INITPRT, SPACE and CARRTN, when finish your results should look like:

```
Session C - [24 x 80]
File Edit Transfer Appearance Communication Assist Window Help
PrintScreen Copy Paste Send Recv Display Color Map Record Stop Play Quit
Columns . . . : 1 71 Edit QUSRSYS/QTXTSRC
SEU=> TEXTONLY
***** Beginning of data *****
0000.01 :WSCST DEVCLASS=TRANSFORM.
0000.02
0000.03 :TRANSFRMTBL.
0000.10 :FORMFEED
0000.11 DATA ='0C'X.
0000.12 :LINEFEED
0000.13 DATA ='0A'X.
0000.14 :EWSCST.
***** End of data *****
MA c A 06/001
Connected to remote server/host 10.0.0.50 using port 23
```

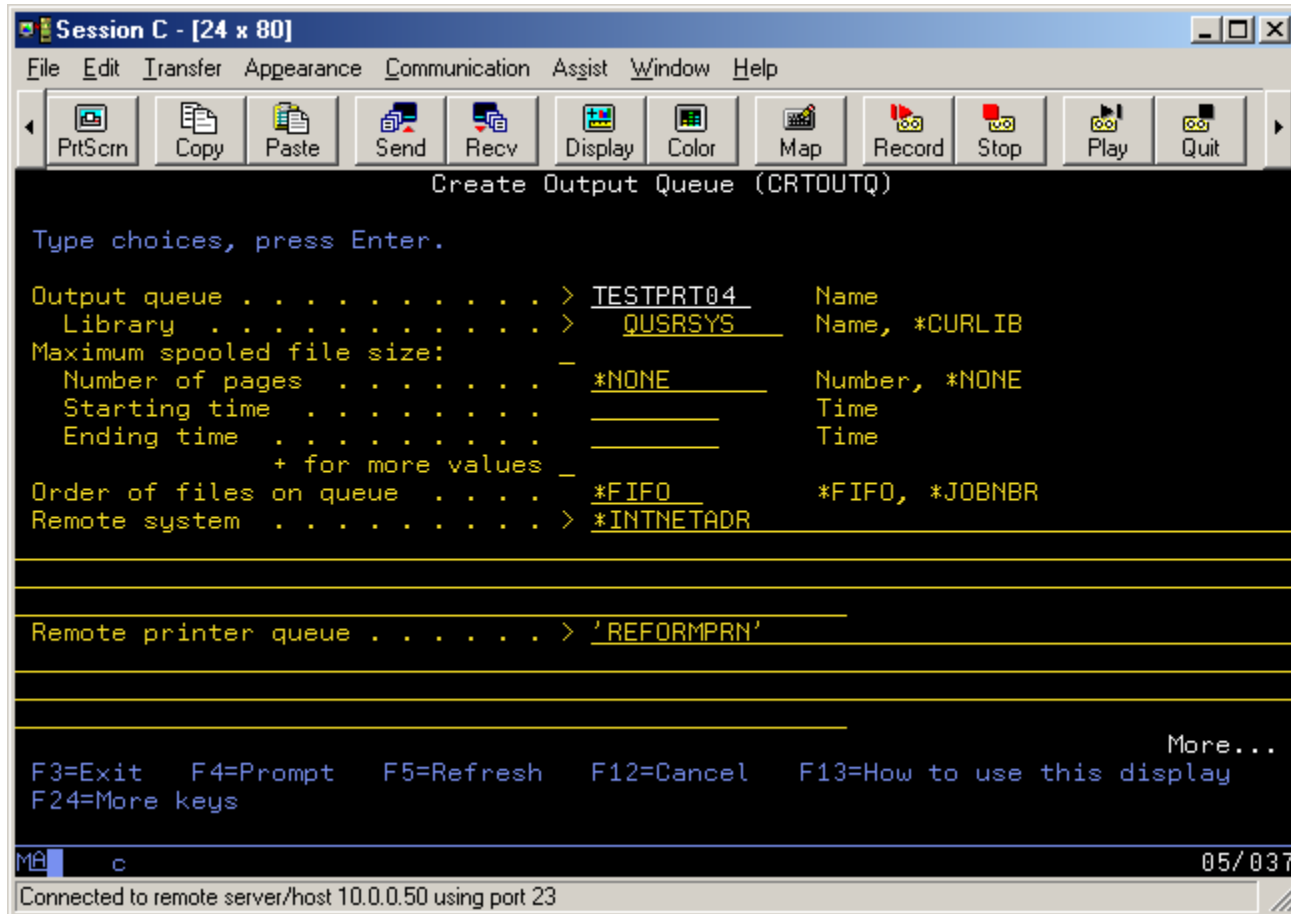
To save the changes to WSCST object type in CRTWSCST at the AS/400 command prompt.



Copyright © FabSoft 2002

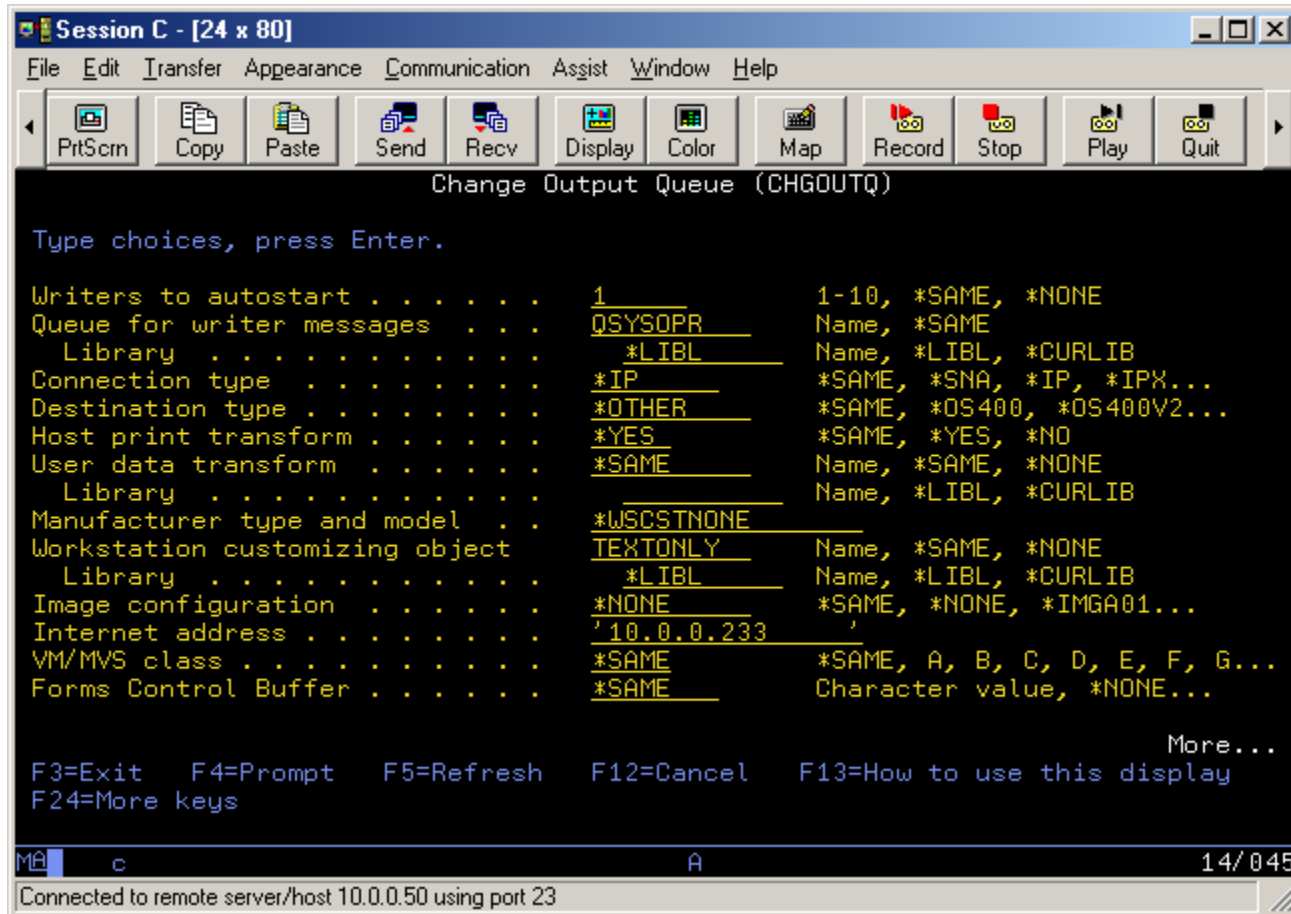
Configure AS/400 Output Queue

To Change an AS/400 Output Queue, type in CHGOUTQ at the AS/400 command prompt. Change the Output Queue setting to direct the Output Queue stream to a Network IP. Press the Page-Down button to view the next screen

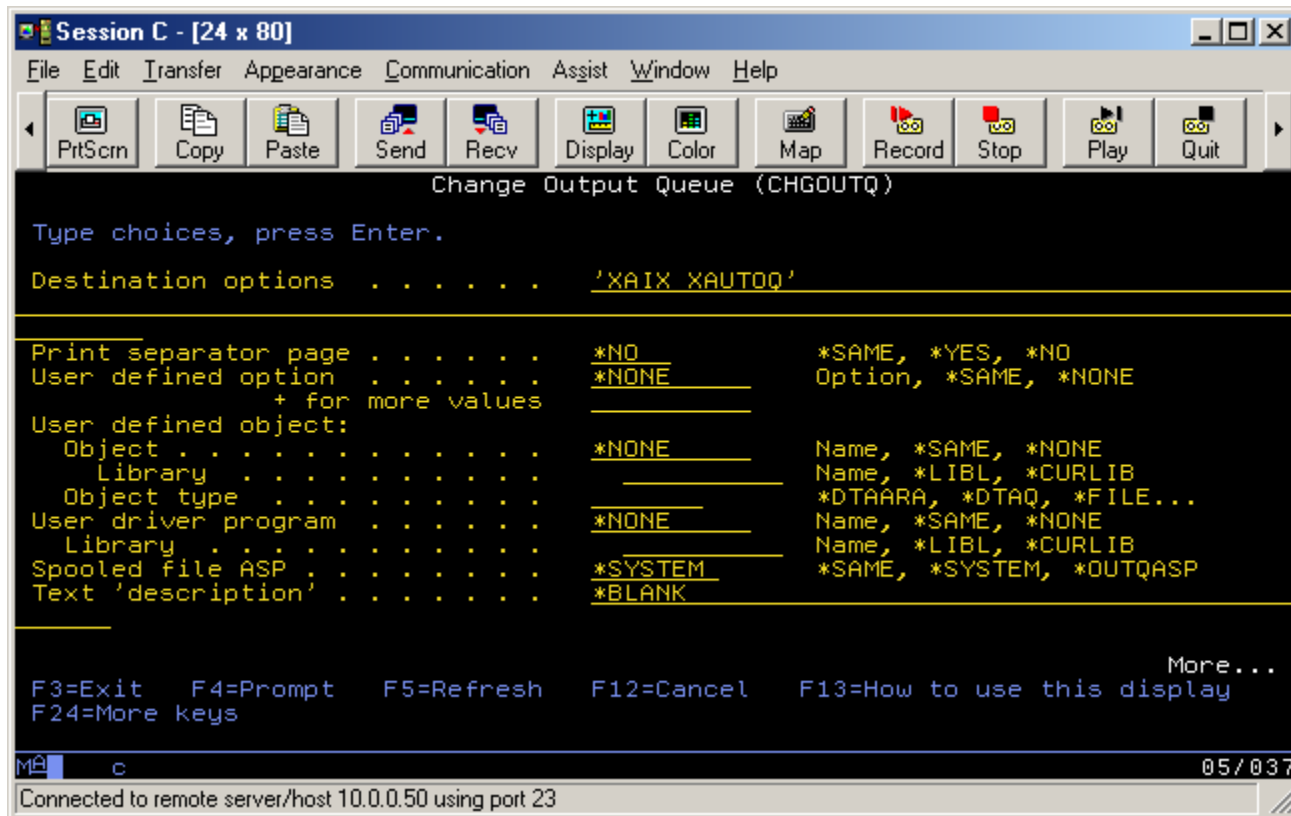


Press the Page-Down button to view the next screen

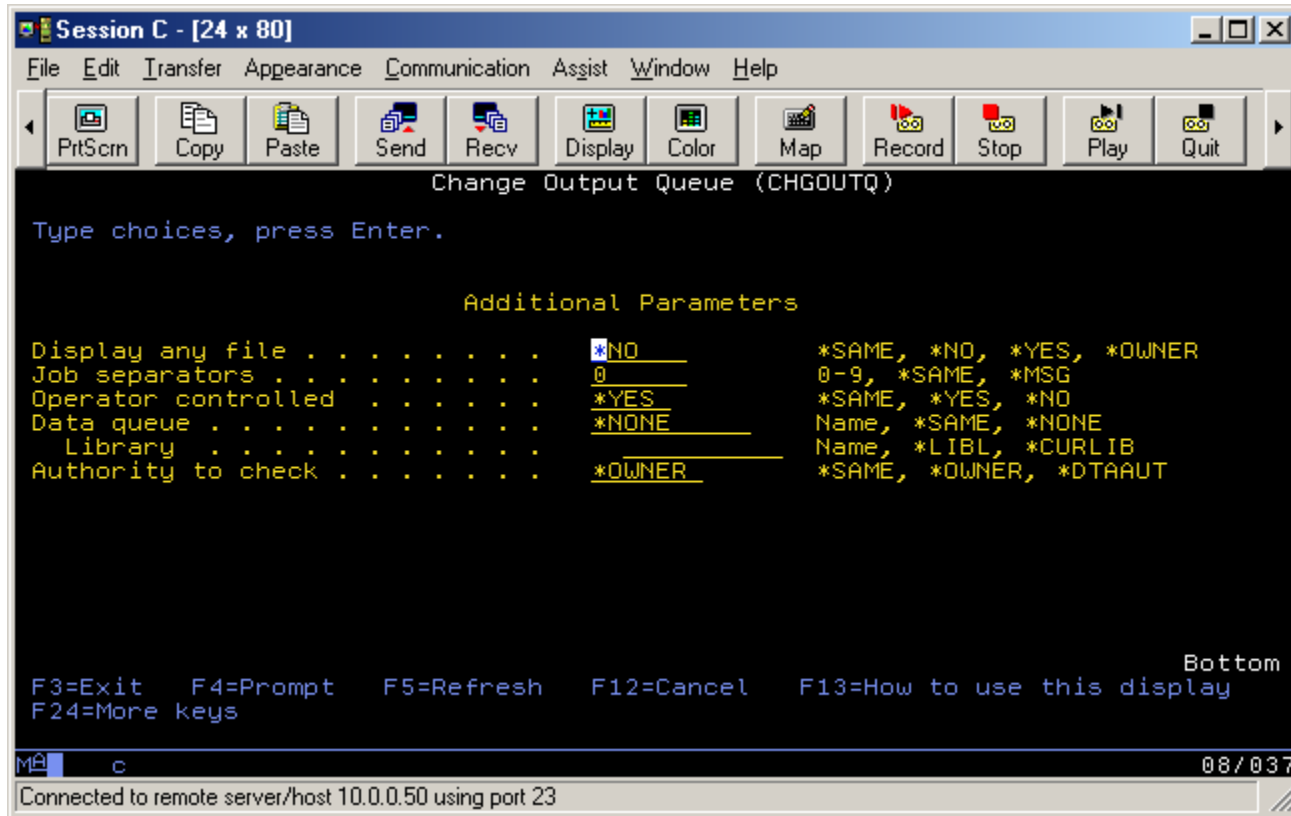
This screen allows you to specify the IP address of the computer that will be running the Reform Spooler. In this example below the Reform Spooler is running on a computer who's IP address is 10.0.0.233.



Press the Page-Down button to view the next screen



Press the Page-Down button to view the next screen

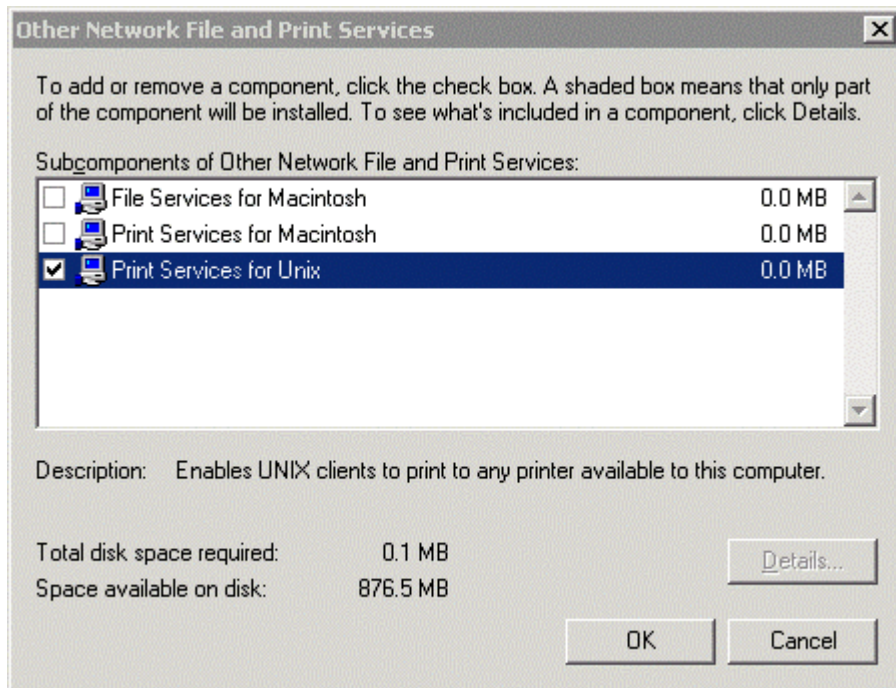


Copyright © FabSoft 2002

Windows LPD

Windows 2000

Control Panel >> Add/Remove Programs >> Add/Remove Window Components >> Other Network File and Print Services >> Printer Services for UNIX



Select OK to install service.

Copyright © FabSoft 2002

Windows NT

1. Right-click **Network Neighborhood** , and then click **Properties** .
2. Click the **Services** tab, and then click **Add** .
3. Click **Microsoft TCP/IP Printing** , and then click **OK** . Insert the source CD-ROM if you are prompted to do so.
4. Click **Close** , and then restart the computer when you are prompted to do so.

Copyright © FabSoft 2002

Installing Reform Printer Driver

Reform Printer Driver

The Reform Printer driver is referred to as the Reform WinClient, this windows printer driver will create a text/ASCII file from the AS/400 print stream automatically. To install the WinClient go to Start >> Programs >> Reform >> WinClient Installation. Once the printer driver is install the printer driver named Reform Printer will appear in the Windows printer manager list. This printer driver is set to be a windows share printer device and the shared name is set to REFORMPRN by default. When the AS/400 redirects the print stream, the computer destination is the computers IP address and the device is the shared name REFORMPRN.

Copyright © FabSoft 2002

